

Colortrac
Our Business is Your Image



SmartLF Utilities Instruction Manual.

User Normalisation.

UK Office: Kings Hall St. Ives Business Park St. Ives Huntingdon Tel: +44 (0)1480 464618 Fax: +44 (0)1480 464620
Email: support@colortrac.com
Web: <http://www.colortrac.com>

Colortrac is the Trading Name of Colortrac Ltd and Colortrac Inc incorporating Tangent and ANAtech
Colortrac Ltd Registered no. 2443087 in England. Registered Office: 115c Milton Road, Cambridge, UK

User Normalisation.

Revision 1.1

©Colortrac Ltd 2005

This document should not be copied without
prior permission from:

**Colortrac Ltd.
Kings Hall,
St. Ives Business Park,
St. Ives,
Huntingdon,
Cambridgeshire,
PE17 4WY.
United Kingdom.**

**Tel: +44 (0)1480 464618
Fax: +44 (0)1480 464620**

www.colortrac.com

Colortrac Ltd makes no warranty with respect to this document and disclaims any implied warranties of merchantability or fitness for a particular purpose. Information in this document is subject to change without notice. Colortrac Ltd assumes no responsibility for errors that may appear in this document.

SmartLF User Normalisation.

This software allows users to control the frequency for the auto calibration and to force the scanner to calibrate.

It is available to all end users and is on the scanner software CD supplied with all SmartLF scanners.

Note:

The SmartLF scanner must have:

Firmware version V50 or above for full functionality, but will still work with lower firmware

And

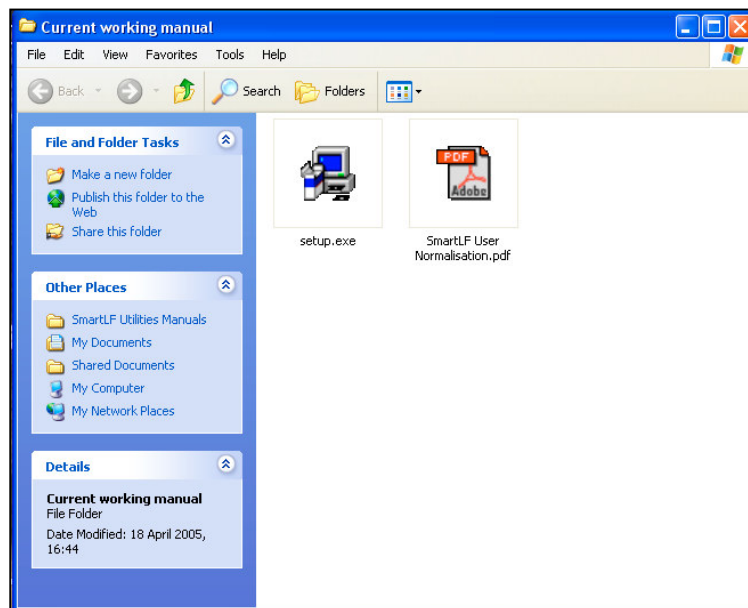
Scanner driver version V3.5 or above

to operate this software. These are available from your local distributor.

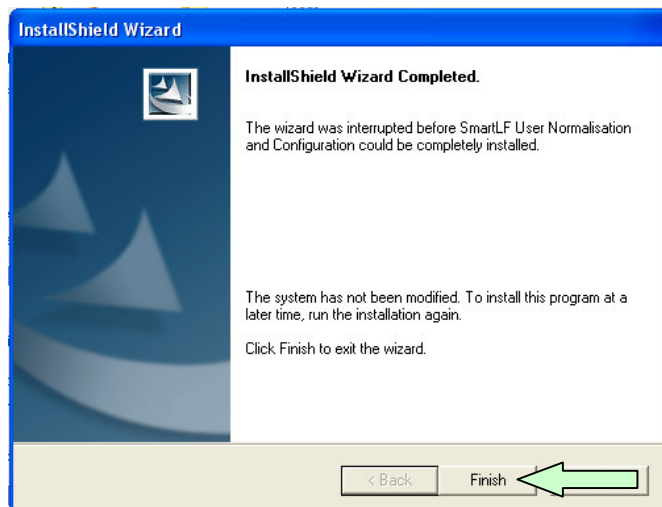
Important Note: ALL support applications and software **MUST** be carried out using a PC running Windows XP only. You must **NOT** use Windows 2000 for any reason.

User Normalisation.

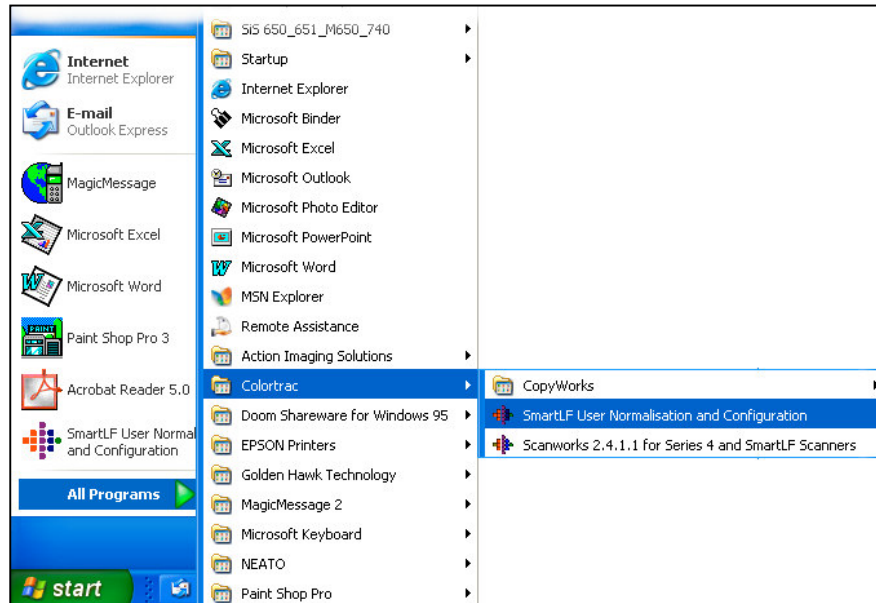
1. Ensure the scanner is connected to the PC, powered up and that the operating software installation CD has been run and completely installed.



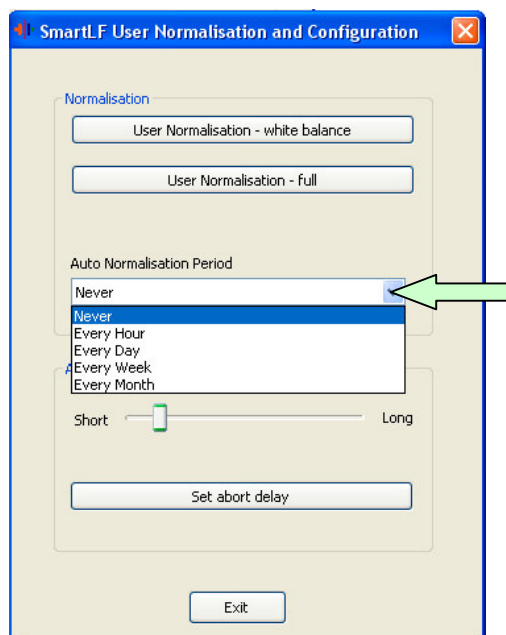
2. Locate the SmartLF User Normalisation 'Setup.exe' program on the Colortrac Service CD. Double click to install.



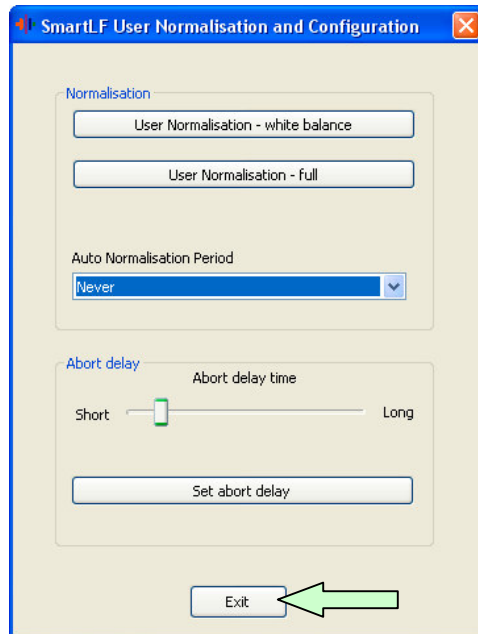
3. Follow installation procedure until completion.



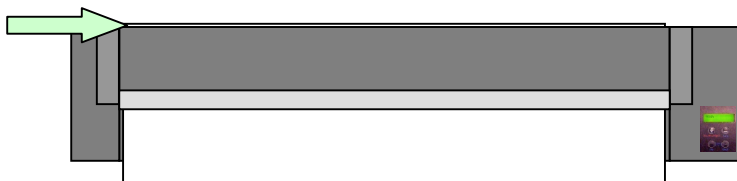
4. Locate the normalisation software in 'Start – All Programs – Colortrac – SmartLF User Normalisation and Configuration'



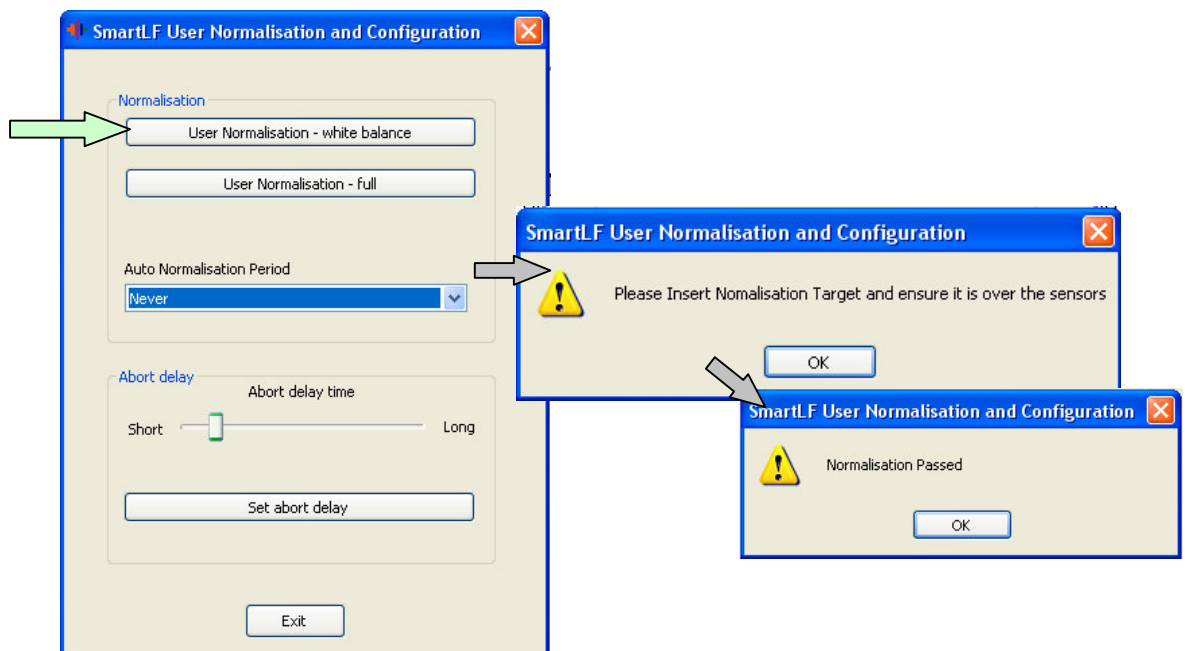
5. To choose the frequency of the automatic calibration the scanner will run, click the drop down bar and choose from the list provided.



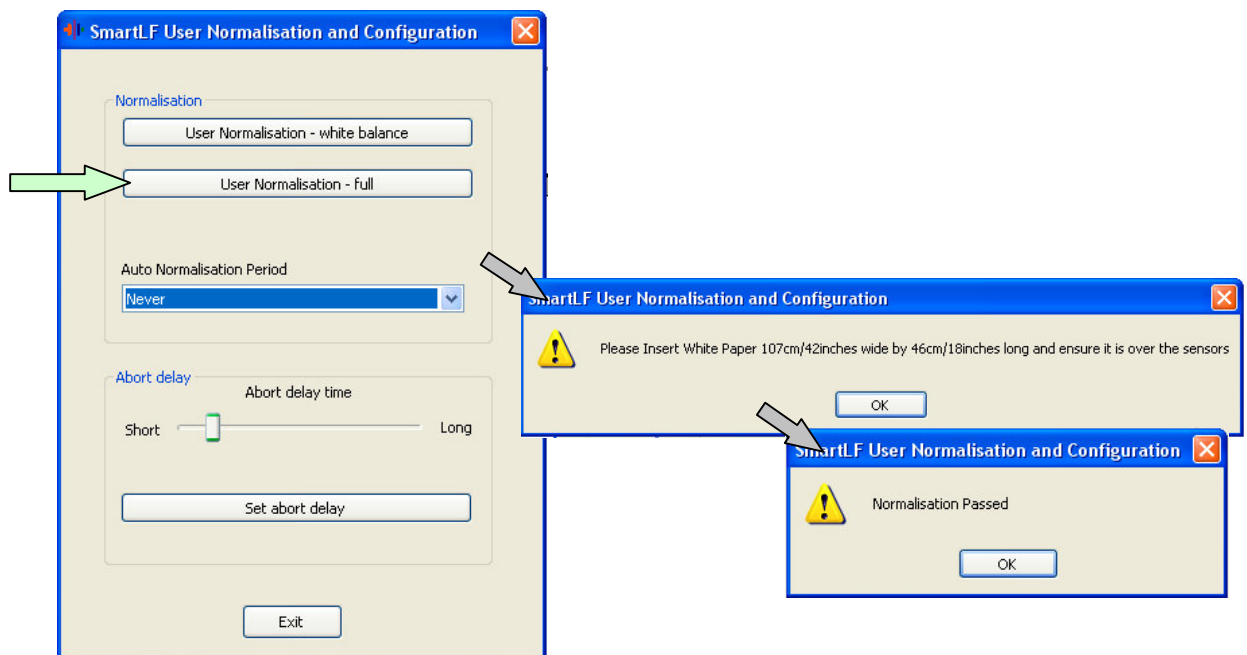
6. Click 'Exit' for setting to be stored.



7. To force the SmartLF scanner to carry out a full calibration, firstly insert a clean white sheet of paper that is full width of the scanner and approx. 19" in length, with the leading edge just through the back of the scanner...



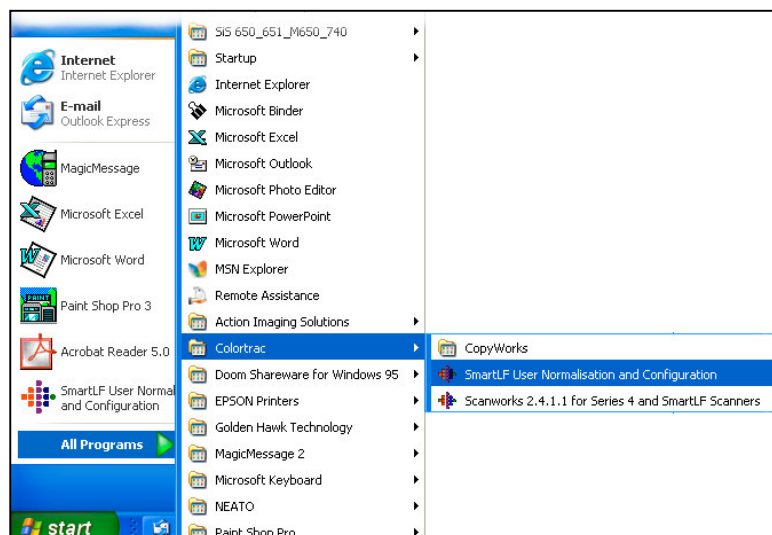
8.then click on the 'User Normalisation – white balance' button on the already opened control box. The normalisation program will run itself then confirm completion at the end. This is a quick calibration which takes an average white point reading from the white sheet inserted.



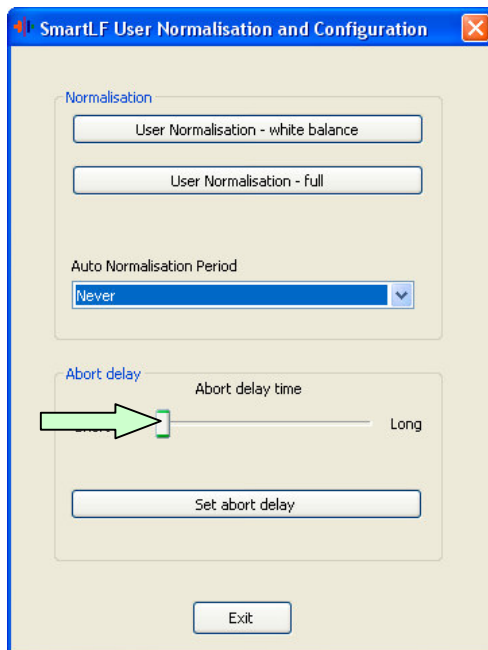
9. The 'User Normalisation – full' button can be used instead of the 'White Balance' option. It carries out a full calibration, pixel by pixel, but will obviously take a bit longer. Both options can be used together if required, as long as the white balance is carried out before the full option. Please note, the media will move through the scanner during full normalisation so it is important to make sure the white document is fed through the scanner as described in instruction 6.

Set Abort Delay.

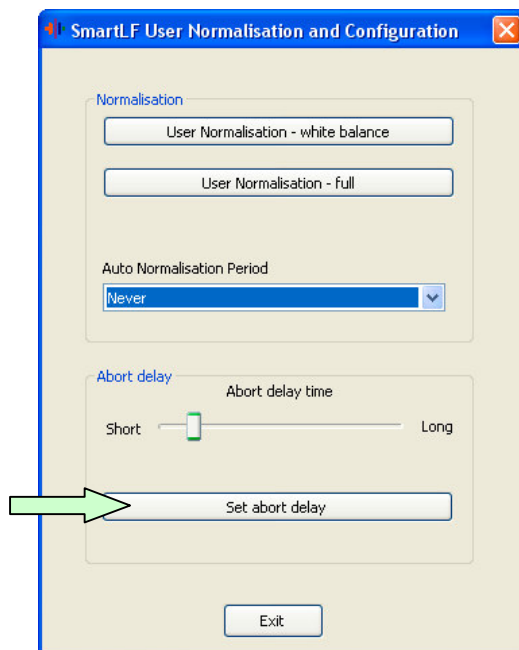
Allows adjustment of the time needed to reject media on insertion. This option is only available for scanners with V50 firmware, and V3.5 driver installed on their PC. Models with older firmware than V50 can run the User normalisation program but without the 'Abort Delay' adjustment option showing.



1. Locate the normalisation software in 'Start – All Programs – Colortrac – SmartLF User Normalisation and Configuration'



2. Move the slider up or down depending on the length of the delay. Slide it to the left to decrease the delay time, and right to increase it.



3. Click 'Set abort delay' to set the chosen delay into the scanner.
4. Click 'Exit' to leave the program.